

SHOWROOM / MEDITATION TOWER

INTERIORS



Design Apartment

攝影 山野攝影 採訪 江洋萱

實品屋 / 近心樓臺 近境制作

080 ISSUE.08





da-interior.com

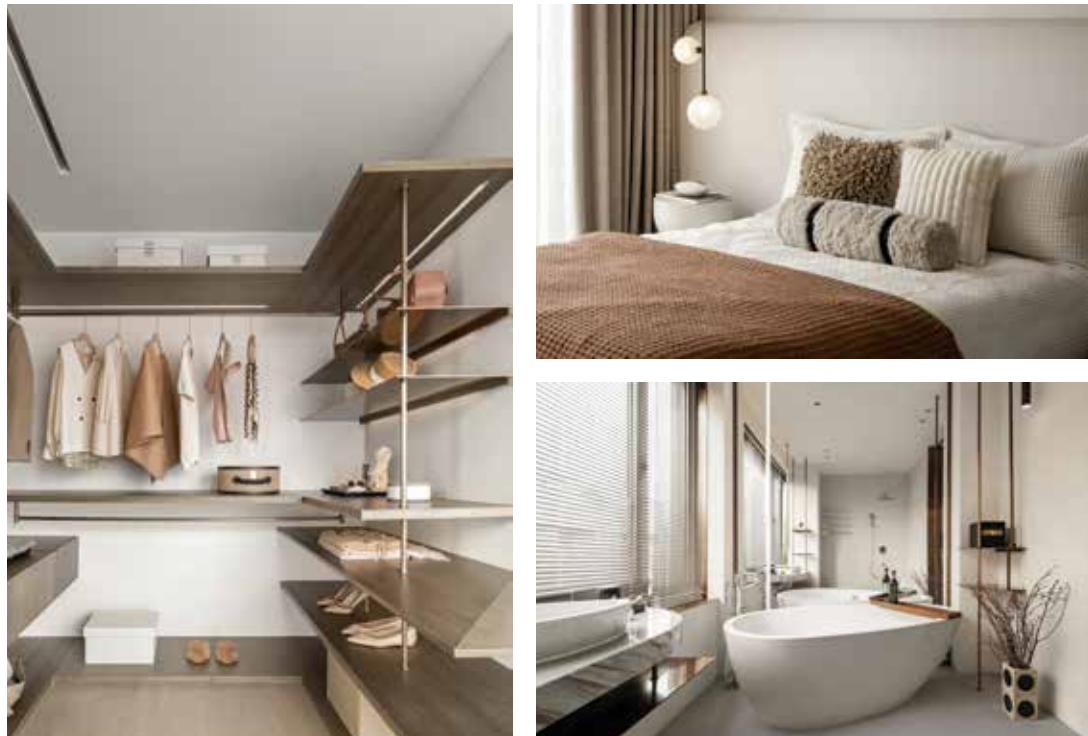
主要設計 唐忠漢

南昌位於中國長江中游地區，水陸興盛經濟蓬勃發展，歷史上一直作為東南重鎮，建城兩千多年名勝古蹟眾多，造就文化底蘊深厚的歷史文化名城。因其地理因素使城市發展越加迅速，生活步調越發煩囂喧鬧，近境制作用在鬱鬱蔥蔥，綠意蒼翠茂盛的江南此岸，打造柳暗花明又一村的獨棟別墅，揉合禪意為南昌提供城市的生活範本。

建築潛形於春和景明的庭院中，在回家的路徑儀式中過濾了塵外紛擾，作為島上登樓的心境轉換點。中介性質的樓梯空間退縮至玄關角落，挖空部分梯間牆面形塑光條自由流動與外景交融，片牆製造回字配置上的迴遊空間，將起居功能的餐廳及客廳緊密貼合，

客廳位居中心點凝聚家的意象，周圍配置半開放廚房空間和長輩房，穿透性高的玻璃拉門使中廚機能獨立而又與起居相融合。大面積玻璃立面引入一碧萬頃的庭院景緻，廊道環繞建築構成豐富的路徑語彙，也為長輩房多增添生意盎然之氣息。踩下樓梯輕盈的片狀踏板，白天的日光或晚間的月色浮光耀金閃爍在牆面上，光影互答。梯間不只作為高程轉變的過道空間，而是感知朝暉夕陰，氣象萬千令人心曠神怡的場所。

沿著高程變化進入地下夾層，從樓頂直通下來的採光井漫射出天光，照亮既定印象中昏暗陰溼的地下空間，投射在石皮肌理上，透出自然純樸的氛圍。多功能空間居中，在此



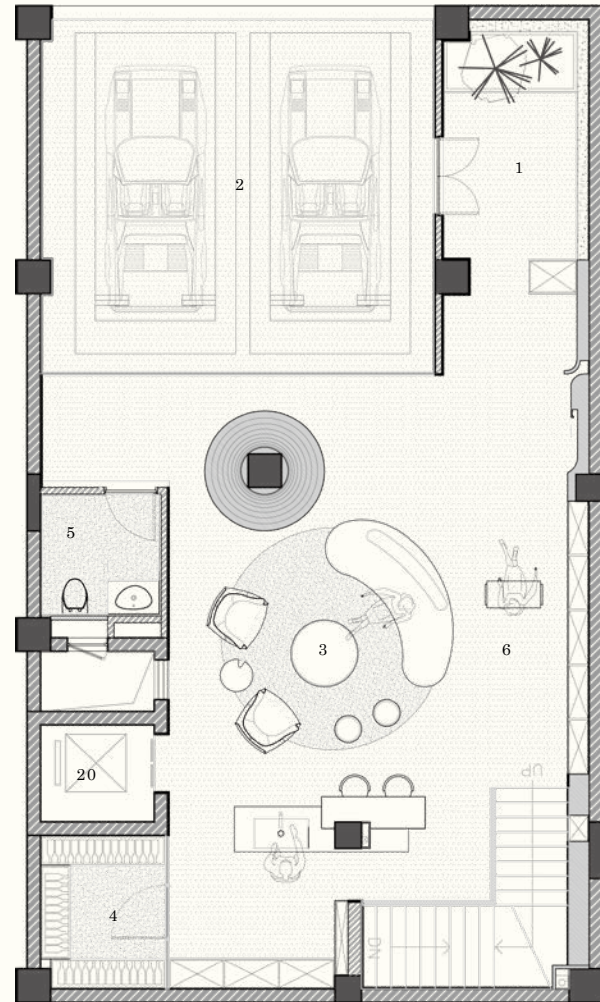
自由徜徉於瑜珈放鬆，身心流動在慢平衡中，同時也是孩童一同在旁玩耍聯繫情感的起居室。樓梯大範圍挑空縮緊了樓層間的連接，向下延續了家的情感意象，橫梁貫穿樓梯動線上的視覺，唐忠漢以弧形造型包覆起大梁結合木質框來削弱量體衝突感。來到地下一層，西廚中島巧妙利用結構柱區分出工作平台及用餐吧台，後方設置酒窖滿足調酒興趣之收藏，玻璃門及不完全封閉的路線安排，最大限度創造自由開放的平面。挑空下方一隅擺盪著鞦韆，深化孩子的童年記憶。私密的臥房領域安置於整幢樓的二、三樓，將機能最純粹簡化，以達到緊密連結之餘又獨立自在的需求。

運用質樸的材料，搭配靜謐溫潤色調，活化光的軌跡，強化觸覺、視覺、氣味、聲音感知，至此五感返璞歸真，不向外求安逸寧靜，而向內建構起簡約沉穩的世外桃源。

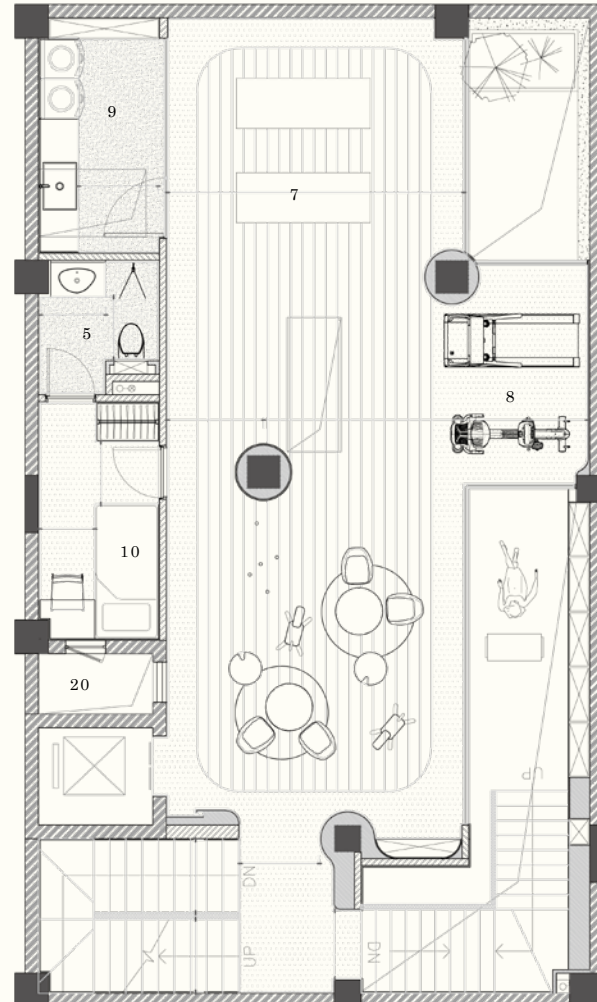
空間性質 實品屋 空間面積 426平方公尺 結構材料 RC
樓層面積 地下二樓：121.4平方公尺 / 地下一樓：95.7平方公尺 / 一樓：73.2平方公尺 /
二樓：73.2平方公尺 / 三樓：62.5平方公尺
使用建材 木皮 / 特殊漆 / 石材 / 鍍鈦 / 玻璃
座落位置 中國江西省南昌市



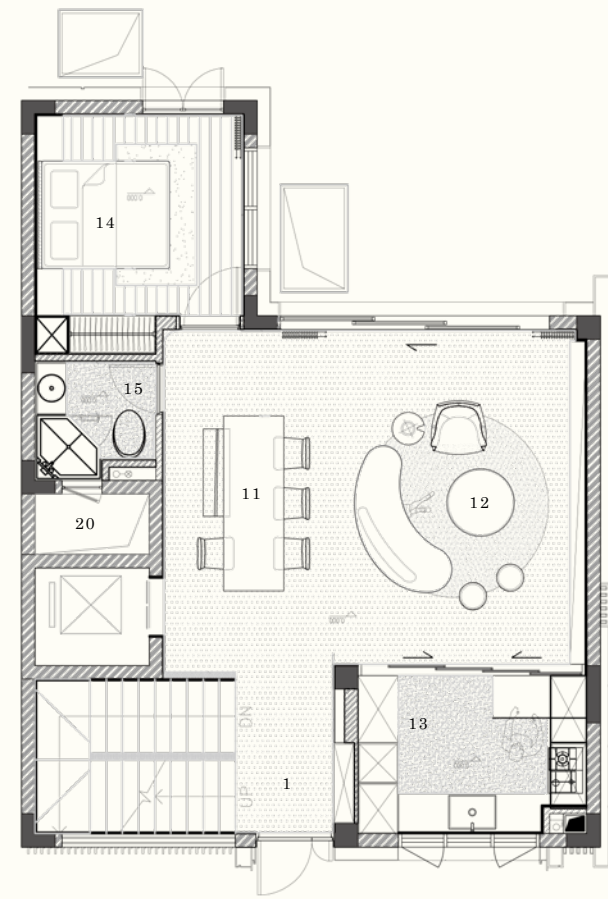
地下一層平面圖
BASEMENT FLOOR PLAN



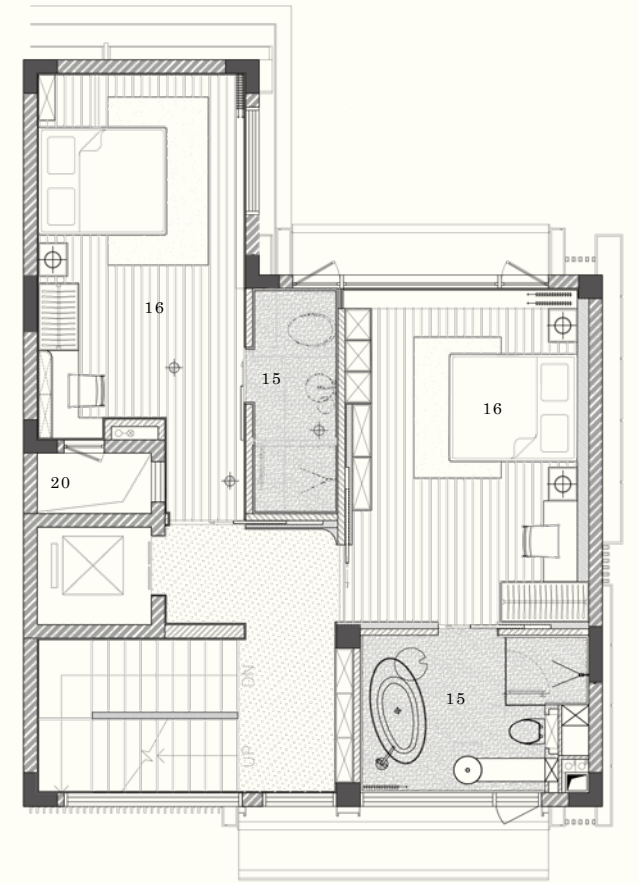
地下夾層平面圖
BASEMENT MEZZANINE PLAN



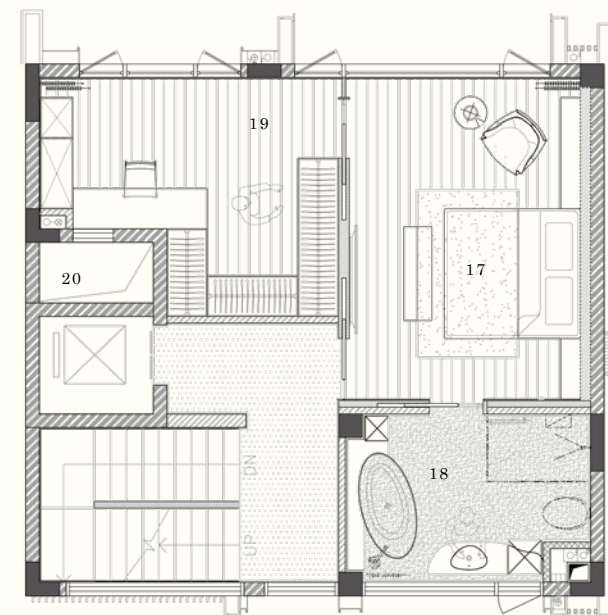
一樓平面圖
GROUND FLOOR PLAN



二樓平面圖
FIRST FLOOR PLAN



三樓平面圖
SECOND FLOOR PLAN



- | | |
|-----------|-------------------------|
| 1 入口 / 玄關 | 1 entrance |
| 2 車庫 | 2 garage |
| 3 會客區 | 3 reception area |
| 4 酒窖 | 4 wine cellar |
| 5 衛生間 | 5 lavatory |
| 6 兒童遊戲區 | 6 children's play area |
| 7 瑜珈區 | 7 yoga |
| 8 有氧區 | 8 aerobic exercise area |
| 9 洗衣房 | 9 laundry |
| 10 傭人房 | 10 maid room |
| 11 餐廳 | 11 dining room |
| 12 客廳 | 12 living room |
| 13 廚房 | 13 kitchen |
| 14 孝親房 | 14 parents room |
| 15 衛浴 | 15 bathroom |
| 16 臥室 | 16 bedroom |
| 17 主臥室 | 17 master bedroom |
| 18 主臥衛浴 | 18 master bathroom |
| 19 更衣間 | 19 walk-in closet |
| 20 採光井 | 20 lightwell |

Nanchang is located in the middle reaches of the Yangtze River in China. It has a thriving economy and a prosperous land and water supply. Historically, Nanchang has been an important town in the southeast and has been built for more than 2,000 years with many famous sights and monuments, creating a historical and cultural city with a rich cultural heritage. Due to its geographical factors, the city is developing rapidly and the pace of life is getting more and more noisy, so we are making a single villa in the lush and verdant Jiangnan area to provide a model of urban life for Nanchang.

The building is concealed in a sunlit courtyard in the warmth of spring. In the ritual of the path home, it filters out the disturbances of the outside world and serves as a point of change for the mind when ascending the stairs on the island. The intermediary staircase space is retracted to the corner of the foyer, and a part of the staircase wall is hollowed out to create a free flow of light bars to blend with the outside view, and a slice of wall creates a circular space in the return configuration, which closely integrates the dining and living rooms. The living room is at the center of the house, surrounded

Principal Designer Tang Chung Han



by a semi-open kitchen space and a room for the elders, and the high penetrating glass sliding door makes the central kitchen independent and integrated with the living area. The large glass facade introduces a view of the courtyard, and the corridors around the building create a rich vocabulary of paths and add a sense of business to the elders' rooms. When stepping on the lightly shaped treads of the staircase, the daylight or the moonlight of the evening flashes on the wall, answering the light and shadow. The stairway is not only a passage space for elevation change, but also a place to perceive the sunlight and the sunset, and the atmosphere is so refreshing.

The light from the light wells leading down from the roof of the building illuminates the dark and damp underground space, and the natural and simple atmosphere is reflected in the stone texture. The multi-functional space is in the center, where the body and mind flow in a slow balance as they wander freely in yoga and relaxation. It is also a living room for children to play and bond with each other. The staircase has a large hollowed out area to tighten the connection between floors and continue the emotional image of home downward. The beams penetrate the visual line of the staircase, and Tang Chung Han uses curved shapes to wrap the beams with wooden frames to weaken the sense of conflict.





In the basement, the kitchen island is divided into a working platform and a dining bar using structural columns. A wine cellar is located at the back to satisfy the bartending hobby, while glass doors and a non-closed route create a free and open floor plan. A swing is swinging in the lower part of the ceiling, deepening the childhood memories of children. The private bedroom area is located on the second and third floors of the building, simplifying the function to achieve the need for close connection and independence.

The use of rustic materials, with quiet and warm colors, activate the trajectory of light, strengthen the sense of touch, vision, smell and sound, so that the five senses return to the basics, not to seek peace and quiet outside, but to build a simple and stable paradise inside.

Photography Shan Ye Photography
Interview Yang Xuan Jiang

Character of Space Showroom
Gross Floor Area 426m²
Floor Area B2F : 121.4m² / B1F : 95.7m² /
GF : 73.2m² / 1F : 73.2m² / 2F : 62.5m²

Structure RC
Materials Wood Veneer / Special Paint / Stone /
Titanium Plating / Glass
Location Nanchang, Jiangxi, China